



BIOMEDICAL RESEARCH MINOR

The interdepartmental Minor in Biomedical Research is designed to help you get involved in laboratory research at an early point in your college career. After initial training courses, you are placed in a laboratory within UCLA for a minimum of four quarters of research. In addition to your research, you take courses in analysis of research literature, oral presentation of research data, science policy and ethics, and history or philosophy of science. Our Interdisciplinary curriculum trains you in both the process of scientific research and the social issues facing science today.

Before you apply to the Biomedical Research Minor, you must take one of the following introductory courses as shown below. These classes use different formats to expose you to concepts central to scientific research. Each class is designed to be accessible to beginning students as early as their first year of college. Check the course catalog for more complete descriptions.



TAKE ONE INTRODUCTORY COURSE



- BR 5HA Biomedical Research Concepts and Strategies
- BR 10H Research Training in Genes, Genetics and Genomics
- HNRS 70A Genetic Engineering in Medicine, Agriculture and Law
- MCDB 30H Collaborative Undergraduate Research Laboratory in Yeast Genetics and Molecular Biology

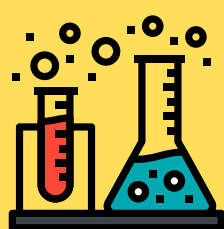


APPLY TO THE MINOR



- Applications are accepted in the Fall, Winter and Spring quarters.
- The application opens Week 4 and deadline to apply is Friday of Week 7.
- Applicants must have a minimum 3.0 GPA.
- The last quarter to apply is Fall Quarter of your 3rd year (Winter Quarter for Transfer Students)

<https://ccle.ucla.edu/course/view/biomed-minor>



PARTICIPATE IN RESEARCH



- Admitted applicants can begin taking courses in their 1st quarter and are usually placed in a lab by their 2nd quarter.
- The curriculum consists of 5 courses in addition to lab research.
- Students complete 4 quarters (16 units) in a lab in the College or Medical School.



PRESENT YOUR RESEARCH



- Students in the Minor must participate in at least one conference or poster session and submit a Senior Thesis by the end of their undergraduate career.

QUESTIONS?

Contact the Biomedical Reserch Minor Undergraduate Advisor

Jayro Ramos | jramos@lifesci.ucla.edu | (310) 825.0237

<https://www.biomedresearchminor.ucla.edu/>